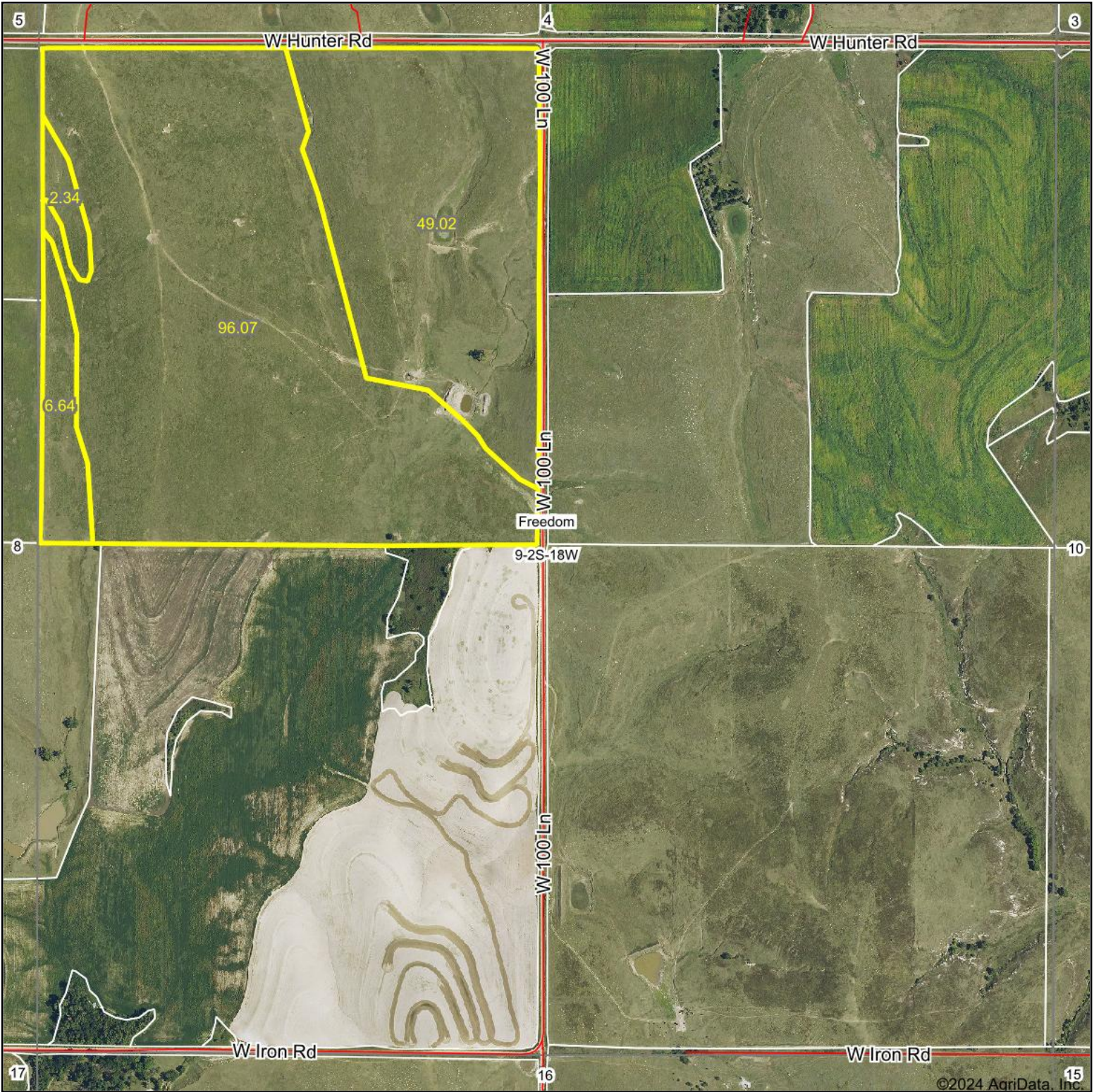
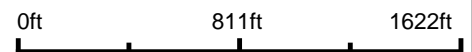


Aerial Map



Boundary Center: 39° 53' 48.74, -99° 21' 40.38



9-2S-18W
Phillips County
Kansas



Maps Provided By:
surety
CUSTOMIZED ONLINE MAPPING
© AgriData, Inc. 2023 www.AgriDataInc.com

1/30/2024

Field borders provided by Farm Service Agency as of 5/21/2008.