

Selling Tractors, Tillage Equipment, Trucks, Trailers, Pickups, Shop & Power Equipment

# BETTY & THE LATE LARRY LALA

# AUCTION

## SATURDAY - OCT 29, 2022 - 9:30AM

2995 A Road, Kirwin, KS • Directions: From Kirwin, KS: 6 Miles South on E. 1100 Rd (Blacktop), East on E. Day Dream Rd 2 Miles, South on E. 1300 Rd 1 mile, East on Early Eve Rd 1 Mile • From Woodston, KS: North on 28 Rd (Blacktop) 6 Miles to C Rd, East 2 Miles to 30 Rd, North 2 Miles • For More Color Pictures visit [www.4Cauction.com](http://www.4Cauction.com).

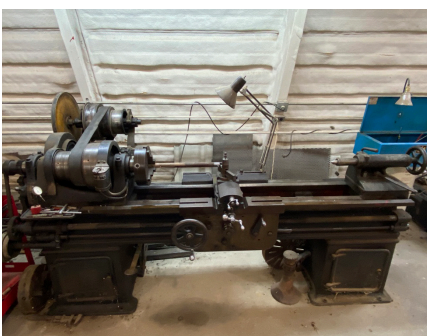


MUST HAVE DRIVERS LICENSE OR POSITIVE PHOTO ID TO REGISTER FOR BIDDER NUMBER

**MOTOR GRADER:** 2000 JOHN DEERE 772 CH Motor Grader, SN DW 772CH574769, 6,380 Hrs 17.5R25 Tires

**TRACTORS:** CASE 4690 SN 10228807, 3 Pt, PTO, 4 Remotes, 18.4-34 Tires - CASE 2670 SN 8858297, 3 Pt, PTO, 4 Remotes, 18.4-34 Tires W/ Model No 12' HD Degelman Industries Dozer (SN 5567) - CASE 2470 SN 8829040, 3 Pt, PTO, 4 Remotes, 18.4-34 Tires, 2 New Inside Rear - CASE 2470 SN 8713174, PTO, 4 Remotes, 23.1-30 Tires, W/ LEON 909 Model Case 2470 (SN 125-806) 9' Bucket & Grapple - JD 3020 Diesel w/DUAL Loader 7' Bucket & Grapple, 16.9-34 New Rear, 3 Pt, PTO, 2 Remotes, SN T55348 - Farmall M, 540 PTO, SN 61289, 13.6-38 Tires, Add on 3 Pt (New Paint) - Farmall M, 540 PTO, SN 60329, New Rear 13.6-38 Tires - Farmall M, 540 PTO, SN 95505, New Rear 13.6-38 Tires - Farmall Front End (Salvage)

**TRUCKS & TRAILERS:** 1999 Freightliner, 13 Spd, Eaton Fuller Transmission, Detroit Motor, 946K Mi, Blue - 1995 Freightliner, 9 Spd, Eaton Fuller Transmission, Detroit Motor, 1 Million Mi, Wet Kit, Century Class Daycab - 1972 42' RTW Model #4532A, MUV-ALL, Winch, Side Extensions, 9' Tailboard - 2010 JET 42' Grain Trailer, Steel Bottom, w/ Shurlock Tarp, 11R24.5 Tires - 1980 Guthrie Cattle Pot, 48' Type GCPB68846, 11R24.5 Tires - 1956 Fruehauf Trailer Company 43' Tanker, SN TD-13139 - 1972 Chevy C60, 31,640 Mi w/ Stack Mover - 1972 Chevy C50 Grain Truck, 4 Speed w/2 Spd, 56,449 Mi, 16' Steel Bed w/ Knaphiede Shurco-Shur-Lok Tarp, 9.00-20 Tires - 2002 24' Travalong Aluminum Stock Trailer - 14'x5' Open Top Bumper Pull Stock Trailer - 24'x7' T Bar E Manufacturing Triple Axle Open Top Stock Trailer SN 0013 - 24'x6' Triple Axle Open Top Stock Trailer - 16'x93" Triple Axle Steel Floor Trailer - 46"x12' Round Water Tank - 2 Wheeled International Pickup Box Trailer



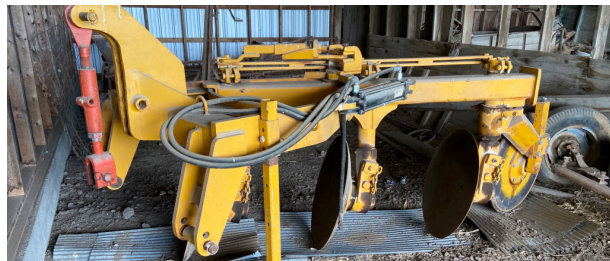
**TILLAGE EQUIPMENT:** 47' Wil-Rich 4152 Air Seeder Hoe Drill 12" Centers - 29' 1443 Sunflower C Flex Disc w/ like new Coil Tine 3 Row Harrow - Flex King 5x6 V Blade w/ Go Diggers - (2) Noble 5x6 V Blade w/ Go Diggers - 29' KENT Field Cultivator w/ Harrows, 6328-4 - Buffalo 8 Row 3 Pt Planter - Buffalo 8 Row Furrow - Crustbuster - JD One Way - JD Model 2210A One Way - Rotary Hoe - 5 Shank Ripper - 4 Bottom Plow - 3 Pt Dempster 5 Row Lister - Vintage Manure Spreader - 3 Pt The Baker Plow Reversible Disc, Model No S-FHD SN 9405037, 3 Discs - Laplant Choate Road Machinery Manufacturing Scraper, 76" Wide SN C-40-597 - Old Grain Drill w/ Steel Wheels

**HAY EQUIPMENT & MOWERS:** Hesston 60A Stakhand, 1000 PTO - New Holland 912 Hydro Static Drive, 4 Cylinder Gas Ford Motor, 14' Platform, SN 166033 - Homemade Haybuck on running gear - 18' 3 Pt Stack Mover, Shop Built - 23' VERSATILE Draper Header, Model 2400, SN 000302 - Side Delivery Rake - 4 Wheeled Hay Racks - 15' John Deere 1508 Mower, 1000 PTO - Sickle Mower - Wigley Mower

**FUEL TANKS, AUGER, SPRAYER & MISC.:** 2 Wheeled Fuel Trailer w/ Elec. pump 450 Gallons - (3) 1000 Gallon Fuel Tanks w/Elec. Pumps -VERSATILE AUGER 540 PTO, 8"x81', Model 8-81, SN 112265 -BIG A 2000 Rickel MFG Salina w/ 1600 Gallon Stainless Steel Tank, V8 Ford Motor

**LIVESTOCK & MISC.:** Danuser Post Hole Auger w/ 4" & 9" Bit - Continental Post Hole Digger - Steel Loading Chute on Wheels - 2 Hay Racks on Running Gear - Old Tool Bar - (10) Misc. Feed Bunks - J&J Carrier Manufacturing Imp Carrier - Electric Fence Posts - Electric Fence String - Wire Winder - Pump Up Sprayers - Cow Catch Carrier

**MOTORCYCLE, ATV'S, SNOW MOBILE & BOAT:** 1980 Honda CX500 Custom Motorcycle 11K Mi. - Honda ATC 110 3 Wheeler - Honda 3 Wheeler - Artic Cat 700 Wildcat Snow Mobile, 180 Hrs - Duracraft Boat, Evinrude Motor, Starflite Motor -Winpower Model 45/25PT 3J 540 PTO Drive - IH H.P. Type LA Engine



**SHOP EQUIPMENT & TOOLS ETC:** Schumacher Boye & EMMES Lathe - Century Five Star AC DC Welder - Dayton Band Saw - Lincoln Weld Pak Welder - Cutting Torch - Porta Power - Motor Oil - Hydraulic Oil - Spud Bars - 1" Drive Socket Set - Misc. Bearings & Other Parts - AC Guages - Tow Ropes - Clevis - Hitch Pins - Come A Longs - Gear Pullers - Pipe Wrenches - Grease Guns - Log Chains - Boomers

**PICKUPS:** 1977 Ford F150 Custom Explorer 4x4, White, 190K Mi. - 1975 Ford F250 Custom 4 Door, 4x4 Yellow, 168K Mi.

**TOY TRACTORS INCLUDING CASE, JOHN DEERE, WATERLOO, NEW HOLLAND, INTERNATIONAL, WHITE, OLIVER & VERSATILE WILL SELL!**

These items plus many more too numerous to mention will sell! **LIVE ONLINE BIDDING** Available on Certain Items, For More Color Pictures & Details Visit [www.4Cauction.com](http://www.4Cauction.com)

**SELLER:** Betty & The Late Larry Lala  
**ASST. AUCTIONEER:** Robert Wyatt 785-877-7263

**LUNCH STAND PROVIDED**



Cody Miller - Broker/Auctioneer  
785-533-3300  
[cody@4Cauction.com](mailto:cody@4Cauction.com)  
[www.4Cauction.com](http://www.4Cauction.com)



**4C LAND & AUCTION, LLC**  
1797 W. 100 RD Phillipsburg, KS 67661

Terms & Conditions: Cash - Approved Check W/Positive ID - Credit Cards Accepted: Visa & Master Card (4% buyer premium waived if payment is made in cash or by good check.) All Items Will be Sold "As-Is Where-Is" - Not Responsible for Accidents - Announcements Made the Day of Sale Take Precedence Over Printed Material.